

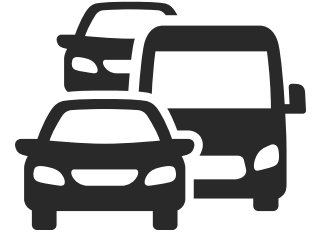
Work Related Road Safety

There are still too many serious injuries, fatalities and illnesses arising from work.

Over the past ten years, there have been more than 1,850 traumatic injury fatalities in Australian workplaces, and over 1,140,000 workers have made a serious workers' compensation claim involving more than one week of working time lost. That's around one in every twelve workers.

Latest Statistics

7 in 10 work-related fatalities involved a vehicle in 2022, showing a slight increase from 68% in 2021.



77% of vehicle-involved worker fatalities stemmed from single vehicle incidents compared to multiple vehicle incidents.

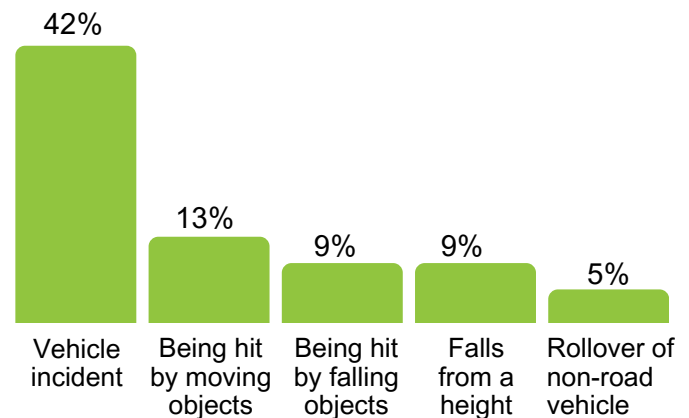
41% of vehicle-involved fatalities involved at least one truck. This has decreased since 2021, where 53% of vehicle related fatalities involved a truck.

Vehicle incidents (81 workers; 42%) and Being hit by moving objects (26 workers; 13%) accounted for more than half (55%) of all worker fatalities in 2022.

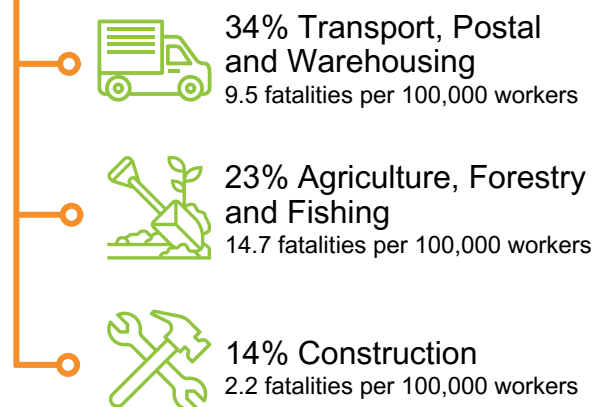
Vehicle incidents includes incidents where an occupant of a vehicle is killed following a collision with another vehicle or a stationary object. Vehicles include not only road vehicles such as cars and trucks, but also machines such as aircraft, boats, loaders, tractors and quad bikes.

Being hit by moving objects includes fatalities involving workers on foot being hit by vehicles, as well as being hit by other moving equipment or objects.

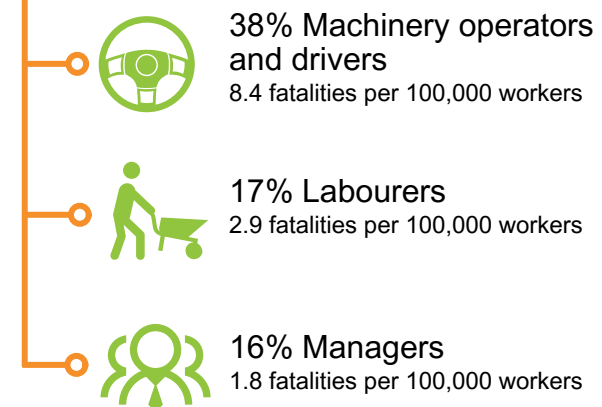
Worker Fatalities by Mechanism 2022



Highest Fatalities by Industry



Highest Fatalities by Occupation



64% of farm fatalities are related to farm vehicles or mobile farm machinery



214 fatalities have occurred involving quad bikes since 2001

Data sourced from Safe Work Australia 2023 and FarmSafe 2023

#ChooseRoadSafety